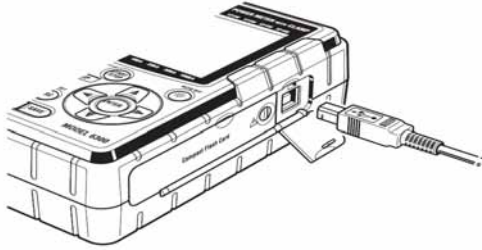


USB Driver Installation

- (1) Connect one end of a USB cord to your PC.
- (2) Set the Function switch on the instrument to SET UP range, and connect the other end of USB cable to the instrument.



- (3) After connecting them properly, following balloon appears.



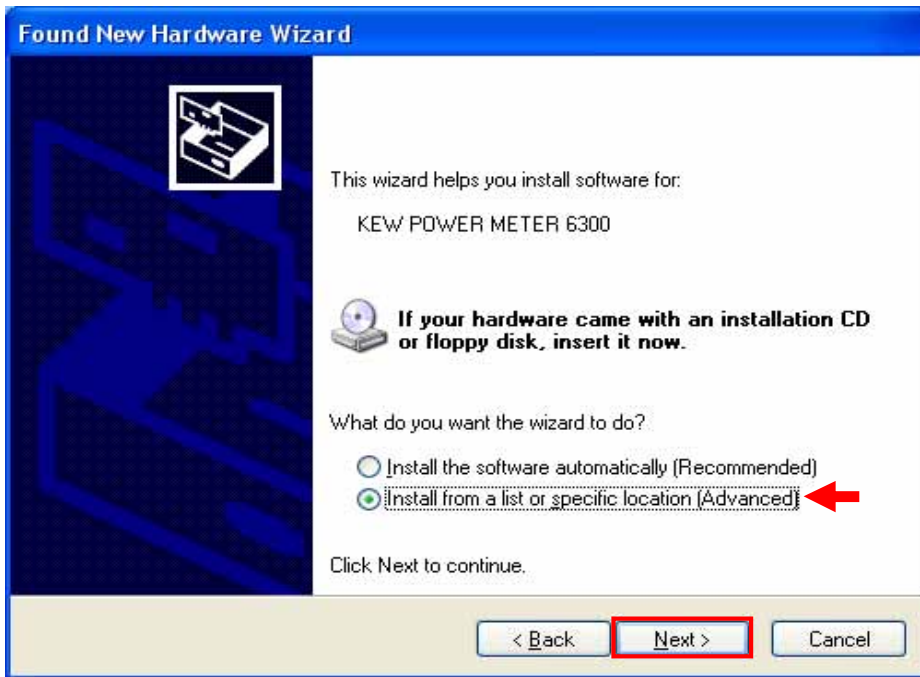
* A balloon shown below appears after following steps (4) to (10) complete. Step (4) to (10) will be repeated twice.



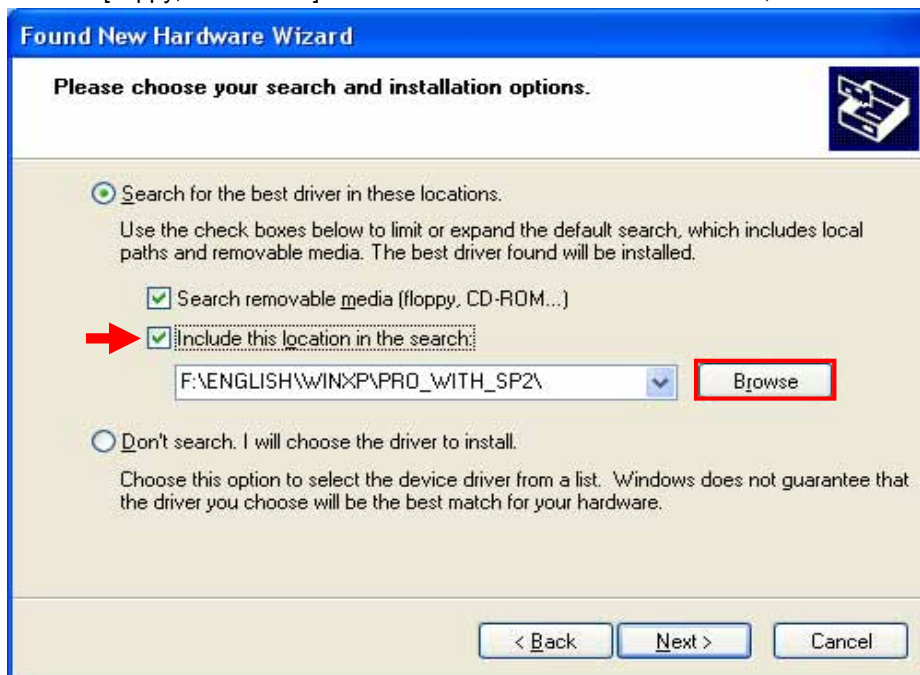
- (4) (3) but after being indicated, the following figure is indicated. Select "No, not this time.", and click "Next".



- (5) Select "Install from a list or specific location (Advanced)", and click "Next".



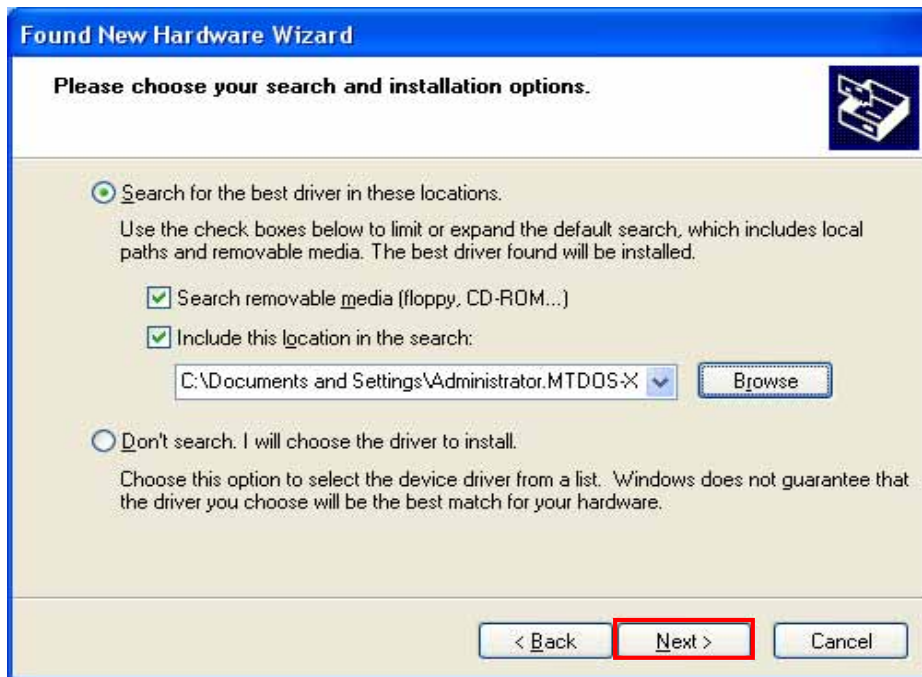
- (6) Check the boxes for "Search for the best driver in these locations." and "Search removable media [floppy, CD-ROM...]" and "Include this location in the search.", and then click "Browse".



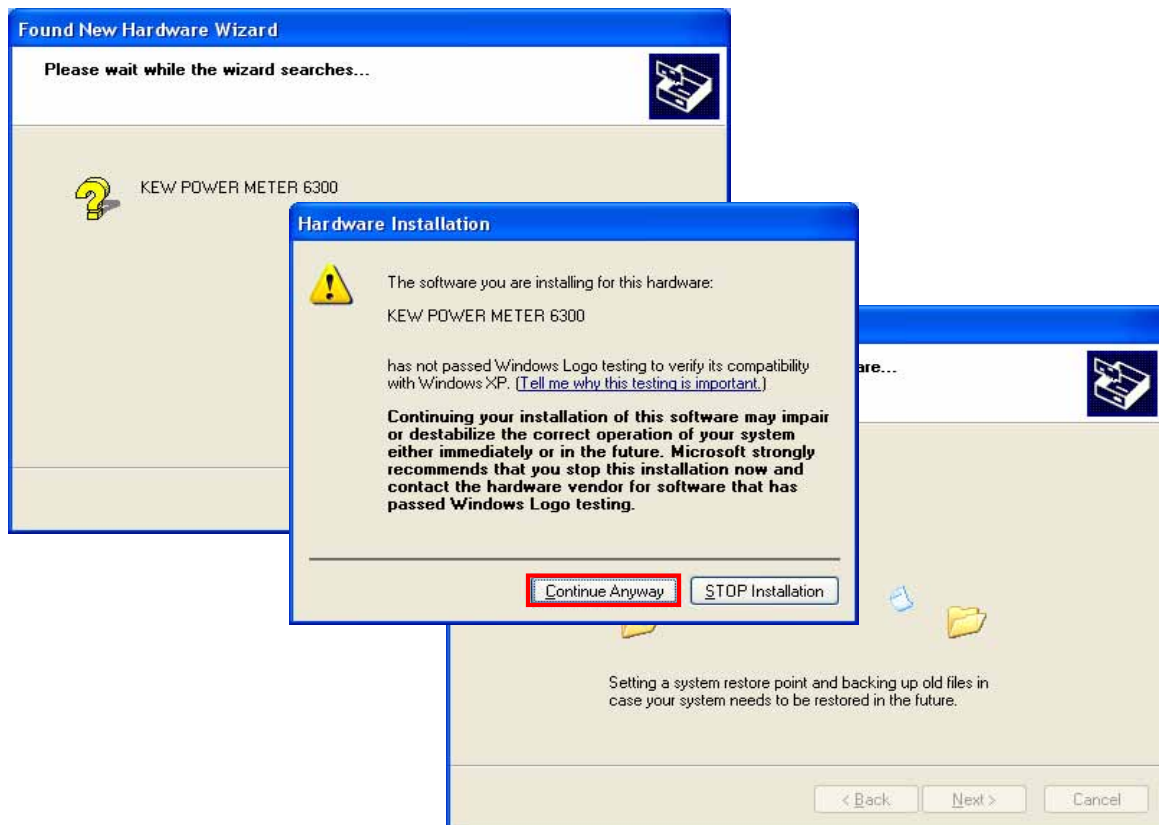
(7) Select a folder to download the file.



(8) It's confirmed that a chosen folder is indicated, and click "Next".



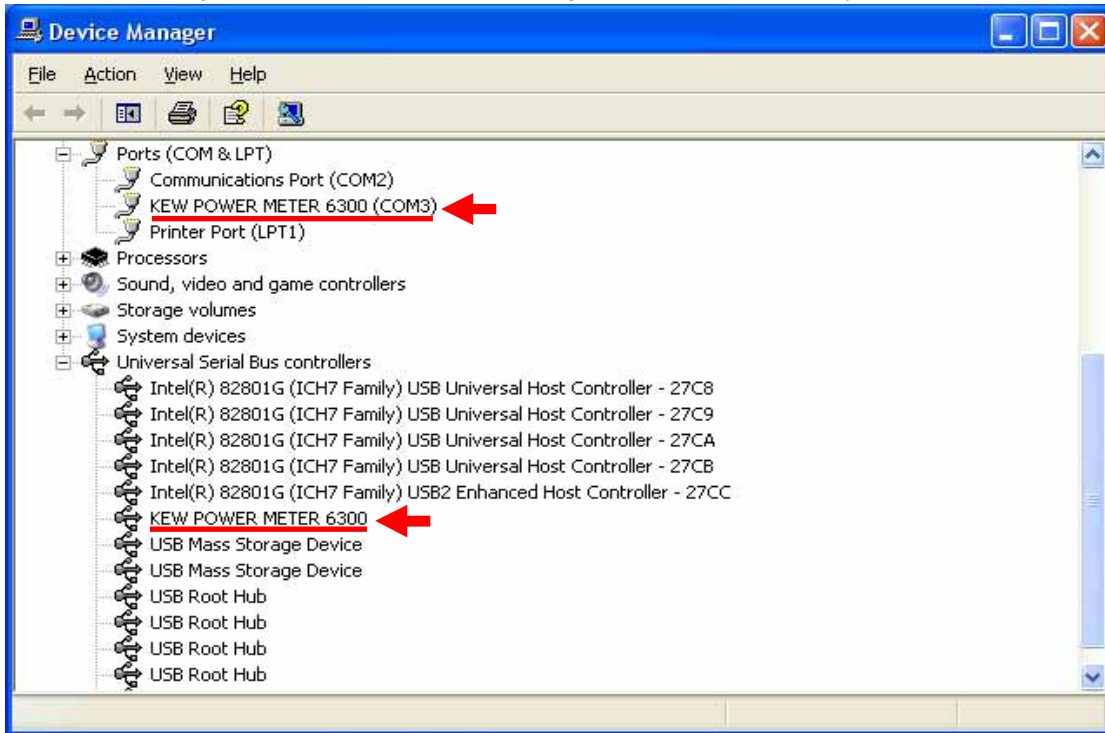
- (9) In case that following window appears on Windows XP, click “Continue anyway”. (It is an operation check, and no problem happens if install is continued.)



- (10) Install is completed when the wizard finishes. Click “Finish”.



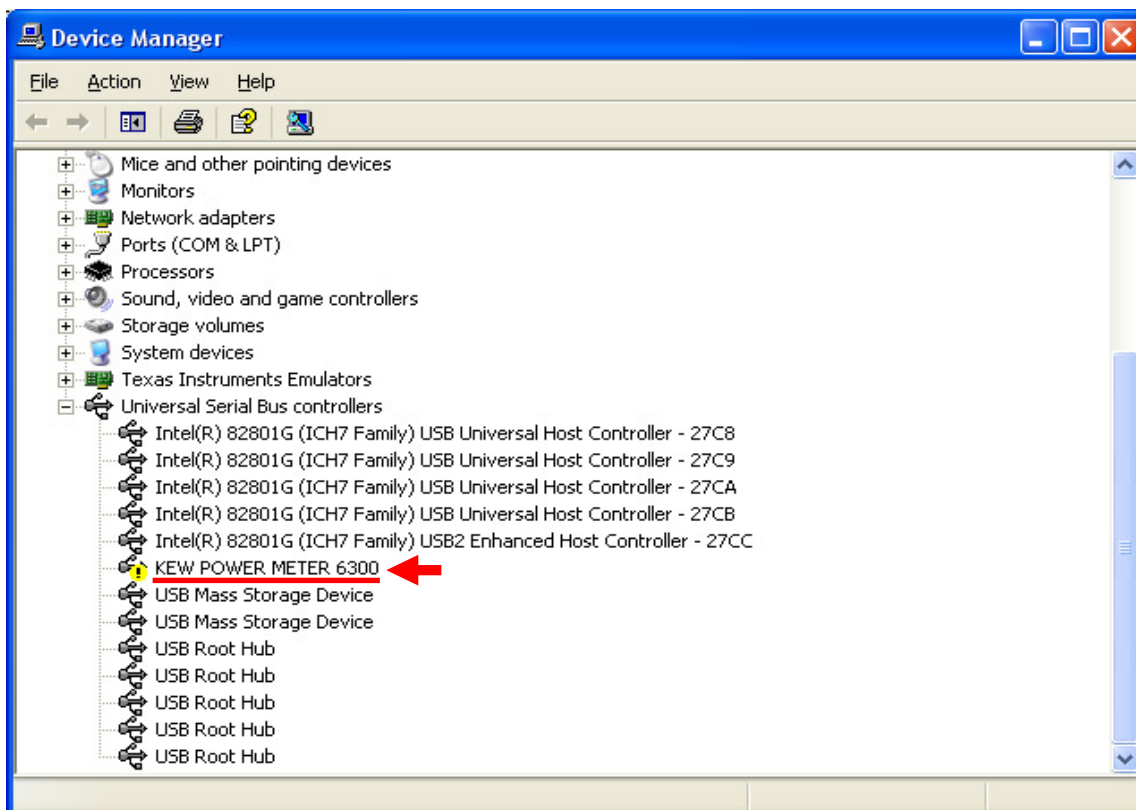
(11) When 2 being installed as shown in the lower figure, a driver was normally installed.



USB Driver Un-installation

When install of the USB driver is interrupted and reinstall cannot be done, follow the procedure below and delete the existing driver, and then install it again.

- (1) Connect a PC and the instrument with a USB cord.
- (2) Click the "Control Panel" in the Start menu.
- (3) Click "System" in the Control panel.
- (4) Then click "Device Manager".
- (5) **Right click** on "KEW POWER METER 6300" in the USB Controller.
- (6) Click "Uninstall" to uninstall the USB driver.



- (7) Remove the USB cord connecting your PC and the instrument once, and connect them again.
- (8) When "Found New Hardware Wizard" window appears, follow the procedures described at "**USB Driver Installation**" and install the driver.